

Jewelry Box



JewelryBox

- Install RVM

JewelryBox

- Install RVM

Google rvm

Click first result

Copy script

Paste and run script in terminal

JewelryBox

- install ruby 1.9.2.something

JewelryBox

- install ruby 1.9.2.something

`rvm list known`

`rvm install ruby-1.9.2-p180`

JewelryBox

- Switch to that ruby

JewelryBox

- Switch to that ruby

```
rvm use ruby-1.9.2-p180
```


JewelryBox

- List gemsets for the current ruby

JewelryBox

- List gemsets for the current ruby

```
rvm gemset list
```

JewelryBox

- Set default ruby

JewelryBox

- Set default ruby

```
rvm use ruby-1.9.2-p180 --default
```

JewelryBox

- Create gemset and use it as default

JewelryBox

- Create gemset and use it as default

```
rvm use ruby-1.9.2-p180
```

```
rvm gemset create brisruby
```

```
rvm use ruby-1.9.2-p180@brisruby --default
```

JewelryBox

- Update RVM
- View installed gems in a gemset
- Install rubies with specific patches/architecture

JewelryBox

Meet JewelryBox

The official RVM GUI.
Manage your rubies and gemsets with ease.



JewelryBox

Ruby Version Manager (RVM)

Quick Install

To install and/or update the latest code from the github repository (requires git):

```
$ bash -s stable < <(curl -s https://raw.githubusercontent.com/wayneeseguin/rvm/master/binscripts/rvm-installer)
```

You can also:

- visit the **installation documentation**,
- watch the most accurate (but not official) **rvm screencast**,
- and try the official RVM GUI (*OS X users only*): **Jewelry Box**,
- starting with Rails? watch the **RailsCasts.com on Getting Started with Rails**

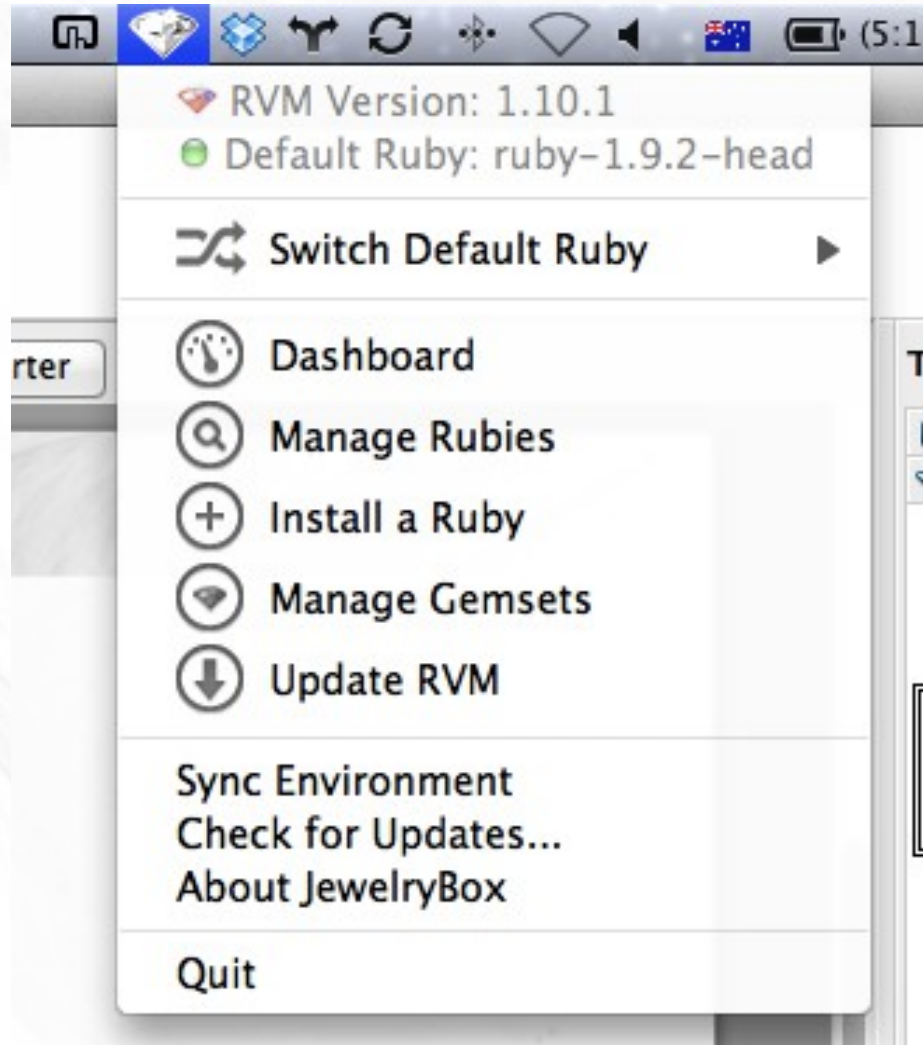
Introduction

RVM is a command-line tool which allows you to easily install, manage, and work with multiple ruby environments from interpreters to sets of gems.

JewelryBox

- Demo
 - Quick panel
 - Main window

JewelryBox



JewelryBox

The screenshot shows the JewelryBox application window. At the top, there is a menu bar with icons for Dashboard, Manage Rubies, Add Ruby, Gemsets, Update, About, and Preferences. Below the menu bar is a dark header with the text 'Manage Gemsets'. The main content area is divided into a left sidebar and a main table. The sidebar lists several Ruby versions and their associated gemsets: RUBY-1.8.7-HEAD (default, global), RUBY-1.9.2-HEAD (default, discuss, global), and RUBY-1.9.2-P290 (default, global). The 'discuss' gemset for RUBY-1.9.2-HEAD is currently selected. The main table displays a list of gems for the 'ruby-1.9.2-head@discuss' gemset. The table has columns for Name, Version, Homepage, Level, and Lo... (likely Location). A '+' button is visible at the bottom right of the table area.

Name	Version	Homepage	Level	Lo...
actionmailer	3.1.0	http://www.rubyonrails.org	discuss	/U...
actionpack	3.1.0	http://www.rubyonrails.org	discuss	/U...
activemodel	3.1.0	http://www.rubyonrails.org	discuss	/U...
activerecord	3.1.0	http://www.rubyonrails.org	discuss	/U...
activeresource	3.1.0	http://www.rubyonrails.org	discuss	/U...
activesupport	3.1.0	http://www.rubyonrails.org	discuss	/U...
addressable	2.2.6	http://addressable.rubyforge.org/	discuss	/U...
ansi	1.3.0	http://rubyworks.github.com/ansi	discuss	/U...
archive-tar-minitar	0.5.2	http://rubyforge.org/projects/...	discuss	/U...
arel	2.2.1	http://github.com/rails/arel	discuss	/U...
bcrypt-ruby	3.0.1	http://bcrypt-ruby.rubyforge.org	discuss	/U...
builder	3.0.0	http://onestepback.org	discuss	/U...
bundler	1.0.21	http://gembundler.com	global	/U...
coffee-rails	3.1.1		discuss	/U...
coffee-script	2.2.0	http://github.com/josh/ruby-...	discuss	/U...
coffee-script-source	1.1.2	http://jashkenas.github.com/c...	discuss	/U...
columnize	0.3.6	https://github.com/rocky/colu...	discuss	/U...
crack	0.1.8	http://github.com/jnunemake...	discuss	/U...
ejs	1.0.0	https://github.com/sstephens...	discuss	/U...
erubis	2.7.0	http://www.kuwata-lab.com/e...	discuss	/U...